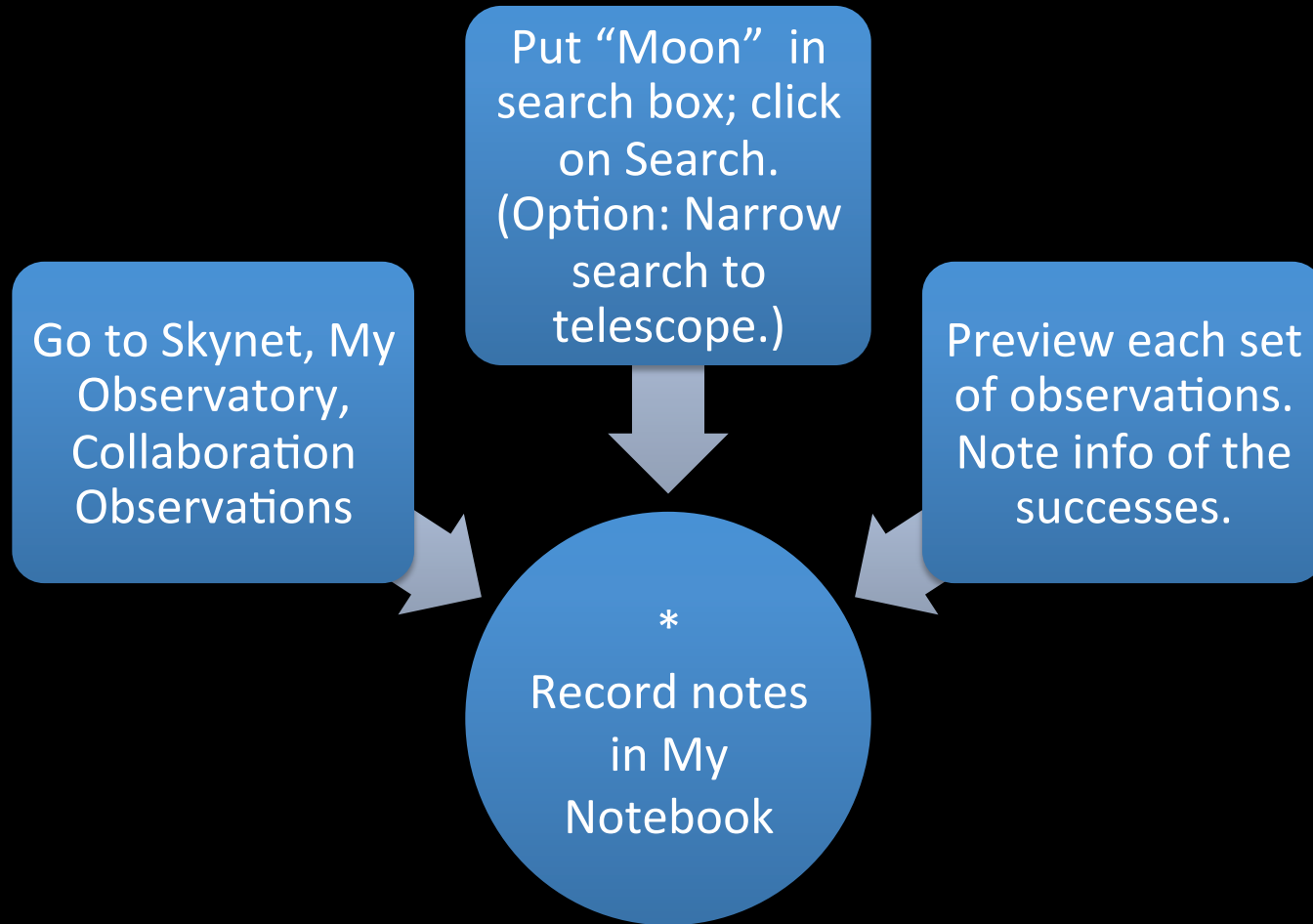




Skynet Junior Scholars Imaging the Moon

- Search for examples...
- Use “LoThru” filters at extremely short exposures...

Search Collaboration Observations



Search Collaboration Observations

HOME MY OBSERVATORY SKYNET LIVE TELESCOPES HELP

My Observations


search:

Advanced Search Options [hide](#)

Telescope: Start Date: Stop Date:

Previous Next

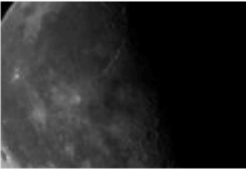
moon



Obs ID: 1153704
Telescope: R-COP
Filter(s): GenR, GenG, GenB
RA/Dec: 21:43:12.6, -10:23:33.6 (moon)
Observer: wi4Honeida14 | Skynet Junior Scholars

completed
3/3 taken

Moon4



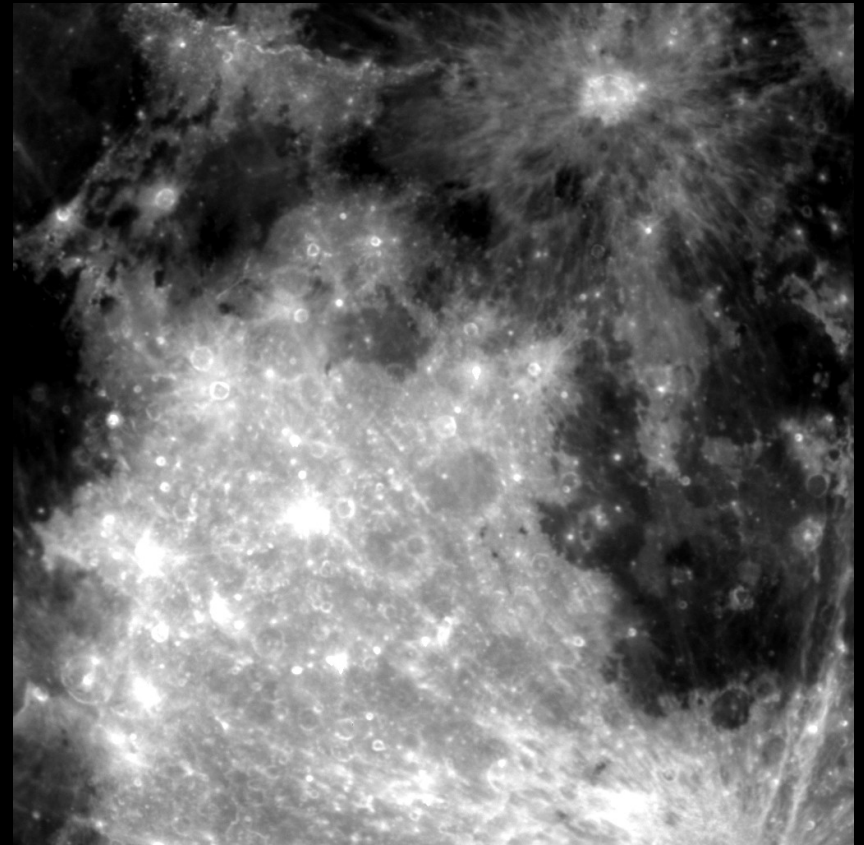
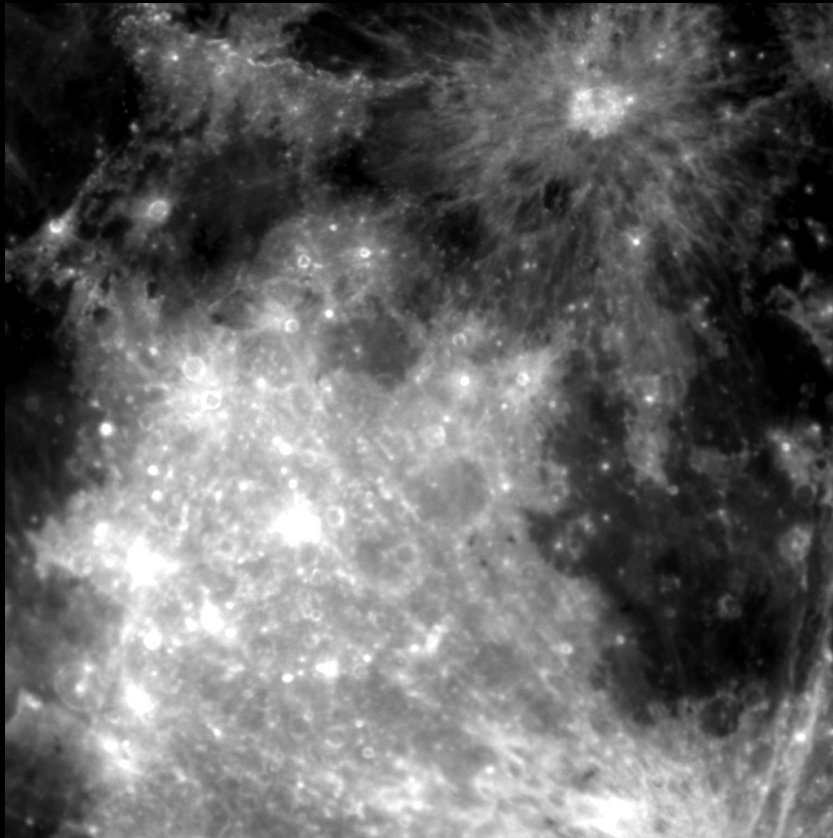
Obs ID: 1025182
Telescope: R-COP
Filter(s): LoThru
RA/Dec: 08:52:21, 12:35:32.8 (moon)
Observer: mdMSgms14 | Skynet Junior Scholars

completed
1/1 taken

PROMPT-SSO-3

OBSERVATION 1128641

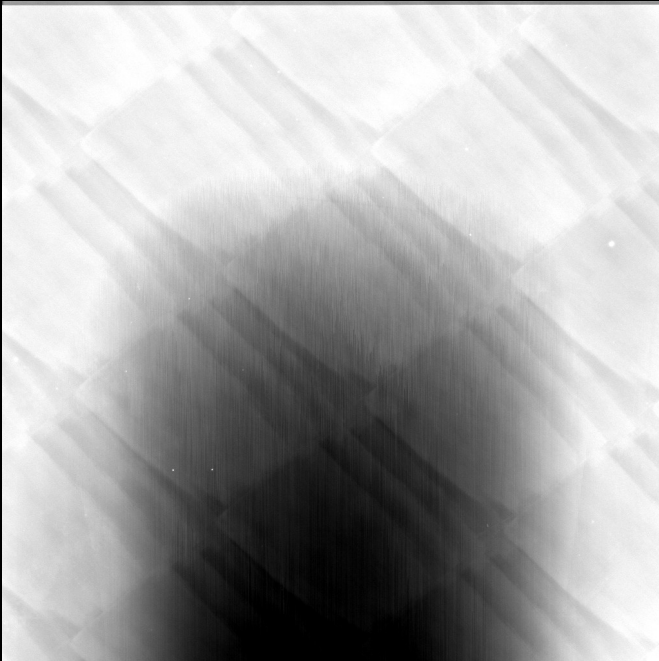
- U filter 0.03 s
- Halpha filter 0.03 s



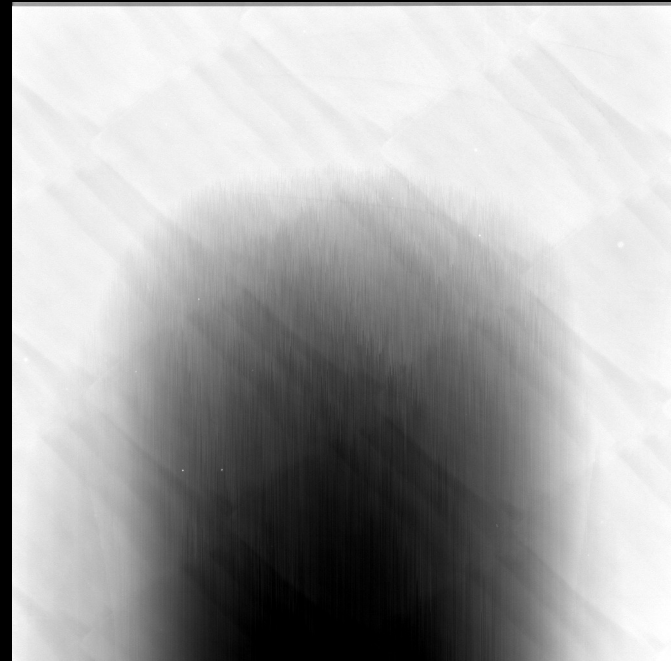
PROMPT-SSO-3

OBSERVATION 1128641

Red, green, **blue** 0.03s, all
look like this – CCD is
saturated!



Clear, lum or other HiThru
filters 0.03s all look like
this, CCD is saturated!



R-COP has larger field of view.

[Observation 1025182](#) Halpha .03s



R-COP has larger field of view.

Observation 1021020 Halpha .05s



DSO-17 More moon fits the field of view. [Observation 1025183](#) B filter .03s

